

## VI 6, 23 CASA DI PANSA

Sample no. 1

*Location* Peristyle. Column 2 from the NE.  
At the middle of the column shaft.

*Decoration* 1<sup>st</sup> style.

*Layer* Plaster and white stucco. First  
decoration covered by no. 2.

*Photo* Film 24, photos 13, 14.



*Plaster* Black and white, lots of crystals

*Binder* Lots of lime.

*Filler* *Compact*: mainly black, irregular rounded. A few brown.

*Porous*: few porous red and bright yellow.

*Crystals*: long black, uncoloured, grey and olive green.

*Stucco*

*Lime* Clean lime, lots of lime.

*Filler* Mainly large uncoloured, grey and yellow. Some small. Some bright yellow particles.

*Plaster type* **CP 1** **group A**

### Notes

This plaster is similar to plasters used for 1<sup>st</sup> style decorations in the Temple of Jupiter (TJ3) and in the Temple of Apollo (TA1).

Stucco similar to that on the column in the south portico in the Temple of Apollo.

## VI 6, 23 CASA DI PANSA

Sample no. 2

*Location* Peristyle. Column 2 from NE.  
At the middle of the column shaft.

*Decoration* 4<sup>th</sup> style decoration.

*Layer* Layer covering 1<sup>st</sup> style decoration.

*Photo* Film 24, photos 13, 14.



*Plaster* Sandy plaster, lots of red

*Binder* Sandy lime.

*Filler* *Compact*: very small grains, black, brown, some yellow.

*Porous*: lots of small red.

*Crystals*:

*Stucco*

*Lime*

*Filler*

*Plaster type* **CP 2** **group H**

*Notes*

Plaster typical of the 4<sup>th</sup> style.

*Same as TJ 2.*

## VI 6, 23 CASA DI PANSA

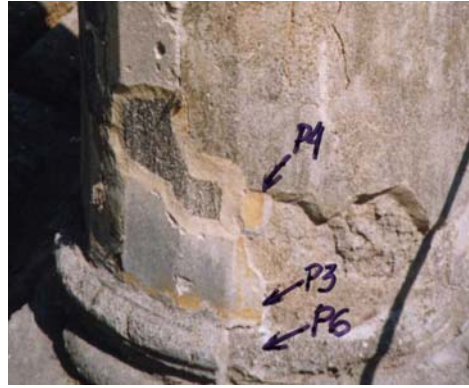
Sample no. 3

*Location* Peristyle. Column 2 from the NE.  
Slightly above the torus.

*Decoration* 1<sup>st</sup> style.

*Layer* Plaster and stucco with yellow  
decoration.

*Photo* Film 24, photos 13, 14.



*Plaster* Black and white, lots of crystals

*Binder*

*Filler* *Compact:*

*Porous:*

*Crystals:*

*Stucco*

*Lime*

*Filler*

*Plaster type* CP 1

*Notes*

Similar to CP 1.

## VI 6, 23 CASA DI PANSA

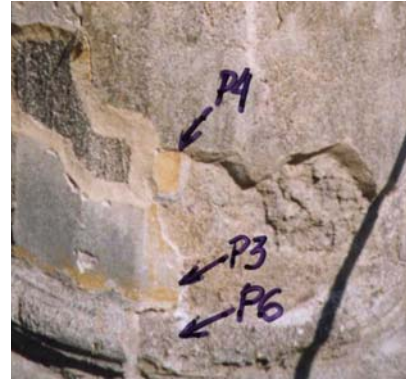
Sample no. 4

*Location* Peristyle. Column 2 from NE.  
Slightly above the torus.

*Decoration* Repair?

*Layer* Layer covering yellow decoration.

*Photo* Film 24, photos 13, 14.



*Plaster* Sandy brown plaster - repair

*Binder*

*Filler* *Compact:* mainly black

*Porous:* lots of red

*Crystals:*

*Stucco*

*Lime*

*Filler*

*Plaster type* **CP 4** **group G**

*Notes*

Really dirty plaster, similar to CP 2, but even more sandy.

## VI 6, 23 CASA DI PANSA

Sample no. 5

*Location* Peristyle. Column 2 from NE.  
At the middle of the column shaft.

*Decoration*

*Layer* Layer covering the yellow decoration  
on the lower part of the shaft.

*Photo* Film 24, photos 13, 14.



*Plaster* Sandy brown plaster

*Binder*

*Filler* *Compact:*

*Porous:*

*Crystals:*

*Stucco*

*Lime*

*Filler*

*Plaster type* CP 4

*Notes*

Same as no. 4.

## VI 6, 23 CASA DI PANSA

Sample no. 6

*Location* Peristyle. Column 2 from NE.  
Slightly above the base.

*Decoration* 1<sup>st</sup> style.

*Layer* First plaster layer.  
Covered by the decorated layer  
no.3.

*Photo* Film 24, photos 13, 14.



*Plaster* Black and white, lots of crystals

*Binder*

*Filler* *Compact:*

*Porous:*

*Crystals:*

*Stucco*

*Lime*

*Filler*

*Plaster type* CP 1

### Notes

Same as no. 1. The yellow decoration, sample no.3, has the same kind of plaster. This decoration is covered by a later phase, sample no.4.